



# Pratt MUNSON

COLLEGE OF ART AND DESIGN

PRATT INSTITUTE'S  
UPSTATE NEW YORK  
EXTENSION CAMPUS

UTICA, N.Y. | [PRATTMUNSON.EDU](http://PRATTMUNSON.EDU)

# WHO WE ARE

Discover a vibrant community of talented art and design students from across the globe at **Pratt Munson**.

Pratt Munson College of Art and Design provides a unique pathway for those wishing to pursue their Bachelor of Fine Arts (BFA) at the main campus in Brooklyn, N.Y. starting in their junior year.

Our accredited program follows Pratt Institute's prestigious curriculum where all students obtain the same esteemed degree while benefiting from the intimate and supportive environment of our upstate New York location.



**Pratt Munson campus is home to the renowned Munson Museum of Art**

With more than 12,000 works by iconic artists like Jackson Pollock, Salvador Dali, and Picasso in its collection, the Museum provides an extraordinary environment for exploration and creative inspiration. Students can freely access the Museum's 20 galleries, enriching their education through encounters with great art only available at Pratt Munson.



**200**

residential  
students

**15**

average  
class size

**10:1**

student  
faculty ratio

**24%**

international  
students

**TUITION SAVINGS OF**

**\$40k<sup>+</sup>**

when completing  
your first two years  
at Pratt Munson

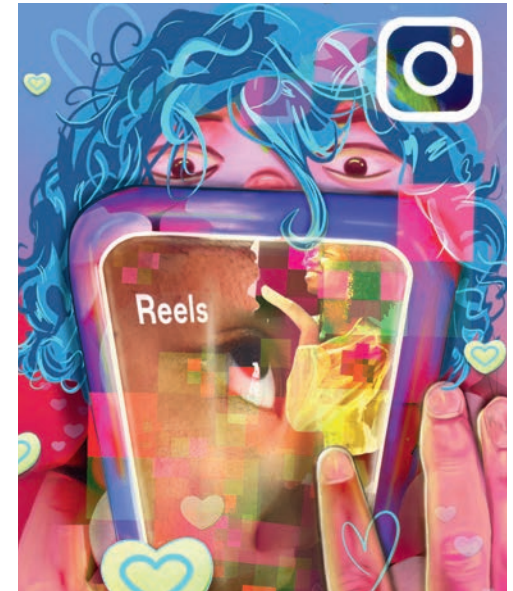
# ACADEMIC PROGRAMS

Pratt Munson offers the first two years of Pratt Institute's renowned four-year Bachelor of Fine Arts degree.

Pratt Munson's curriculum consists of four programs of study. Develop rich perspectives and hone your practice alongside students from around the world as you begin your art school experience.

## PROGRAMS OF STUDY

- ➔ **Communications Design** – graphic design or illustration
- ➔ **Fine Arts** – painting, drawing, printmaking, sculpture and integrated practices, and jewelry
- ➔ **Photography**
- ➔ **Art and Design Education**



## Communications Design

### *graphic design, illustration*

There is no single way to practice communications design. At Pratt Munson, we see it as a close alignment of thinking and making. In today's image-centric world, the demand for design is rapidly growing, covering graphic design, illustration, advertising art direction, and branding.



## Fine Arts

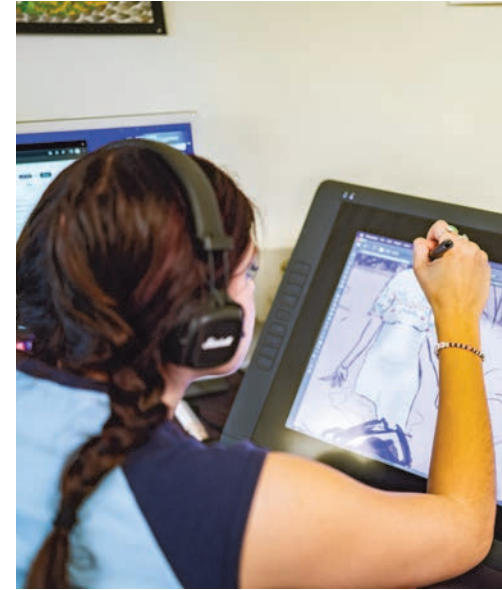
*painting, drawing, printmaking, sculpture and integrated practices, and jewelry*

No matter the discipline, many skills learned studying fine art, such as problem solving and conceptual thinking, form the foundation for successfully navigating all aspects of life. The world is revealed through the hand, mind, and expression of the artist.



## Photography

The photography program combines fine arts traditions and contemporary practices with the practical aspects of being a lens-based artist. Students explore a wide range of photographic processes and styles to fostering critical thinking and independence in various forms of media creation.



## Art and Design Education

*teacher preparation/certification*

Address complex social issues, experiment with new ideas and materials, and to shape the role of art and design in social change and transformation in collaboration with schools, community, and cultural organizations.



# CULTURE AND COMMUNITY

**Pratt Munson offers a unique experience where students thrive in two distinct art cultures: Utica and Brooklyn.**

While our students benefit from the highly ranked Pratt curriculum and a prestigious degree in art, they are able to begin their art education on an intimate campus that builds their confidence and provides unique opportunities to showcase their work and collaborate closely with full-time faculty. After gaining valuable insights in Utica, students immerse themselves in the vibrant energy of NYC.

## STUDENT LIFE

**96%**

students live on campus

**100+**

student-hosted events per year

**16**

clubs



**The Pratt Munson campus combines the prestige and advantages of a Pratt Institute education in a location that fosters confidence, individuality, and worldly perspective.**

Campus offers a unique experience for students as it's shared with the Munson Museum of Art, which houses world-class collections, exhibits, events, and classes. The Museum provides an extraordinary setting for exploration and creative inspiration to elevate and inspire a student's studies.

**Pratt Munson attracts passionate students, who aspire to be true artists.**



## **ABOUT UTICA**

- ➔ Centrally located in upstate New York
- ➔ 4 hours from New York City
- ➔ Population of 65,283
- ➔ Access to 6 million acres of protected Adirondack wilderness

### **BY THE NUMBERS**

- ➔ 100+ arts, culture, and humanities organizations
- ➔ 20 galleries and local artists' studios
- ➔ 12 museums
- ➔ 6 theaters
- ➔ 3 history museums

# APPLY

## Start your creative journey at Pratt Munson!

### HOW TO APPLY

Our admissions team is here to help. When you apply to Pratt Munson, our admissions team reviews all aspects of your application and portfolio, so that we're considering the comprehensive understanding of who you are — your interests, your experiences, your aspirations, and your readiness for the first year of your intended major.



➔ [pratt.edu/apply](https://pratt.edu/apply) ➔ [commonapp.org](https://commonapp.org) ➔ scan QR code

Application Plan	Application Deadline*	Notification Date	Recommended Financial Aid Deadline**
Early Action-Non Binding	Nov. 15	Dec. 15	Jan. 15
Priority Deadline	Jan. 15	Feb. 15	March 1
Additional Deadlines ( <i>first year and transfers</i> )	Feb. 15 March 15 April 15	A month after your submission deadline	March 1

\* In order for your application to be considered complete, all aspects of your application must be received by our office. This includes transcripts, SlideRoom portfolio, the Common Application, and test scores (if applicable).

\*\* We recommend you submit your FAFSA as early as possible. When submitting the FAFSA, be sure to use the school code: **002798**. For more information about filing the FAFSA, as well as aid and scholarships, visit [prattmunson.edu/finaid](https://prattmunson.edu/finaid).

# FINANCIAL AID

### ADMISSION DEADLINES

Pratt Munson offers one of the most affordable ways to pursue a career in art, without sacrificing quality or the student experience.

**74%**

Accepted students are offered a merit-based scholarship

**97%**

Students receive a merit-based scholarship upon relocation to Pratt Institute

**82%**

FAFSA filers receive a need-based institutional grant

**\$40,000**

Approximate tuition savings for students that begin the first two years of their BFA at Pratt Munson

# TUITION

### COST OF ATTENDANCE 2024-25

Full-year tuition	\$40,364
Fees	\$2,399
Housing	\$10,252
Food	\$7,672

**TOTAL \$60,687**

### QUESTIONS?

[finaid@prattmunson.edu](mailto:finaid@prattmunson.edu)  
800-755-8920





# OUTCOMES

**At Pratt Munson, a significant aspect of your journey involves transitioning to Pratt Institute in your junior year.**

## UTICA → BROOKLYN

After two years of establishing a solid foundation, refining your artistic skills, and fostering connections within the Pratt Munson community, students collectively make a seamless transition to the Brooklyn campus.



Pratt Munson and Pratt Institute collaborate for a smooth transition. A group trip to the Brooklyn campus is organized during sophomore year, allowing students to tour, meet faculty, and explore your departments.

In your last semester, offices from both institutions coordinate to prepare you for junior year in Brooklyn, including informational sessions about housing, financial aid, study abroad, class registration, and more.

# PORTFOLIO

Your portfolio is a compilation of your artistic achievements and a means to visually express your identity. Show off your distinctiveness and creativity through your portfolio by highlighting your passions, individuality, inspirations, and skills.

When you submit your application to Pratt Munson, remember that your portfolio offers us insight into your essence, growth potential, and readiness to tackle the upcoming classroom experiences from day one.



## HOW TO MAKE YOUR PORTFOLIO SHINE

*What do you most love to make?* The best way to prepare your portfolio is to not make work specifically for your portfolio. Just make art, and lots of it. Show how you can go beyond what is expected or predictable. Take risks. Use your sense of composition and abilities in different techniques and mediums that give you joy.

Above all, the most important thing to include in the work you create for your portfolio is you. Use this process as an opportunity to enjoy and express yourself — not as a chore or a way to tick off boxes.

## WHAT TO INCLUDE

The type of work you include in your portfolio doesn't need to be specific to your major. It can be created in response to assignments from others or totally on your own and can include both finished work and unfinished pieces from your sketchbook. *Here's what else to include:*

### → A range of skills and approaches

At Pratt Munson, we're all about investigation and exploration. We're open to work that uses different types of media, different visual styles, or different subjects you enjoy. You might also show examples of different ways you approached a single visual prompt.

### → Additional requirements

Make sure you read the full directions laid out in the application instructions, and follow them carefully.

### → Observational work *(optional)*

We encourage you to include examples of work based on direct observation of objects or people. While artwork from photos or imagination provides insights into your technical and creative skills, showcasing how you use line, value, texture, and/or composition to capture real-life forms and spaces on a two-dimensional plane can deepen our understanding of your creative problem-solving process.

Visit [prattmunson.edu/portfolio](https://prattmunson.edu/portfolio) for the most up-to-date portfolio requirements for all our programs.



## PORTFOLIO REQUIREMENTS

**10-15** Portfolio pieces of your most recent work!

## SCHEDULE A PORTFOLIO REVIEW

We're happy to share suggestions on your portfolio — either in person or virtually.

→ Visit [prattmunson.edu/portfolio](https://prattmunson.edu/portfolio).

→ **Make an appointment** with one of our talented counselors by emailing [admissions@prattmunson.edu](mailto:admissions@prattmunson.edu).

→ **Call 800-755-8920**

## TIPS ON PUTTING IT ALL TOGETHER

The most important part of putting together your portfolio is choosing what to put in it. When that time comes, curate your work so that you're sharing your favorite things you've made, in as much variety as you can.

Put everything in order in a way that tells your own artistic story. Make sure your images are clear, cropped, and uncluttered. Please avoid adding text to your images (unless it's a part of the artwork); we ask that you use the description box to tell us more about the piece.

There's no magic combination or checkbox of formats we're looking for, and we won't compare you to anyone else. During our review process, we'll look for your dedication, care, and respect towards your own work, the way your portfolio shows your unique background and experiences, and throughout it all, that you've been having fun making art.

# Pratt MUNSON

COLLEGE OF ART AND DESIGN



310 GENESEE ST.  
UTICA, N.Y 13502  
PRATTMUNSON.EDU

ADMISSIONS@PRATTMUNSON.EDU  
800-755-8920 (OPTION 1)